

PROLUX CORE

Heavy Duty Single-Pad Floor Buffer/Scrubber

MODEL: CORE

Operation Instructions

Read all instructions before using this appliance



For your safety please read owners manual in its entirety before use.

Congratulations on the purchase of your new Prolux Core Heavy Duty Single-Pad Floor Buffer/Scrubber! Weighing in at only 28 lbs, with its wide array of cleaning/scrubbing pads, powerful high speed/high torque motor, the Prolux Core has all the pads you need for any floor surface and any job. Comes standard with a 2-year limited body warranty and an extended, 5-year limited motor warranty due to its heavy-duty industrial grade motor, and modern lightweight durable body design/material. The core was designed to be one of your hardest working, most dependable appliances, with an industry first height adjustable telescopic handle, washable cleaning pads, easily attachable cleaning accessories, and simple to use design.



Table of contents

Specifications	3
Safety Precautions	4-5
Assembly	
Getting To Know Your cleaner	6
Assembling your cleaner	7
Operation	
Using your Prolux Core Buffer	8
Using the Cleaning Pads	9
Maintenance	
How to clean the scrubbing pads	9
Cleaning the Housing	9
Troubleshooting	10
Warranty	11-12

Specifications

- Modern, Lightweight heavy-duty construction
- 13" Buffer
- Wattage - 250
- Voltage - 115
- Easy to clean pads
- Speed - 150 rpm
- Hertz - 60
- Cleaning Path - 13"
- Commercial Rated Pig Tail Cord ready to accept your choice of commercial extension cord.
- Industry First Industrial grade height adjusting telescopic wand.
- Single Button Operation
- Quiet, Anti-Scratch soft rubber wheels
- Locking pivot with pedal release
- Swiveling cord hook for easy storage and setup when moving from job to job.
- Perfect for any job with a variety of multi-surface cleaning pads to chose from.
- Warranty: 5 Year Limited motor warranty, 2 year limited bumper to bumper.
- Designed & Developed in the USA

IMPORTANT SAFETY INSTRUCTIONS

When using an electrical appliance, basic precaution should always be followed, including the following:

READ ALL INSTRUCTIONS IN THIS OPERATING MANUAL BEFORE USING THIS APPLIANCE.

Keep the operating manual for reference. Include the operating manual if you pass the appliance to third parties. **Violations of the operating instructions can lead to severe injuries as well as damages to the appliance.** Prolux takes no responsibility for damages due to violations of these operating instructions.

The Notices Given

Notices for your safety are especially marked. Always observe these notices to avoid any damages to the appliance.

WARNING: Warning concerning health hazards describing possible risks of injury.

ATTENTION: Warning concerning possible dangers to the appliance or other objects.

NOTE: Highlights tips for you.

WARNING-To reduce the risk of fire, electric shock, or injury:

1. Do not leave the cleaner when plugged in. Unplug from outlet when not in use, and before servicing.
2. Use only as described in this manual. Use only the recommended attachments and replacement parts.
3. To reduce the risk of electric shock, do not use outdoors, or on over saturated surfaces.
4. Use only as described in this manual. Use only the manufactures recommended attachments.
5. Do not use with damaged cord or plug. If the cleaner is not working as it should, has been dropped, damaged, left outdoors, or dropped into water, take it to a service center before use.
6. Do not pull or carry the cleaner by its power cord, do not use the power cord as a handle, do not close the door on power cord, or pull the power cord around sharp edges or corners. Do not run the cleaner over the power cord. Keep the power cord away from heated surfaces.
7. Do not unplug the power cord from your wall by pulling on the cord. To unplug, grasp the end of the plug, not the cord.
8. Do not handle the power cord, or cleaner with wet hands.
9. Do not put any object into the openings or moving parts of the cleaner. Do not use the cleaner with any openings blocked. Keep openings and moving parts free of dust, lint, hair and anything that may cause the unit to not work properly.
- 10.Keep hair, loose clothing, fingers and all parts of body away from openings and moving parts of the cleaner.
- 11.Turn all controls off before unplugging the cleaner.
- 12.Use extra care when cleaning on stairs.
- 13.Do not use to pick up flammable or combustible liquids, such as gasoline, or use in areas where they may be present.
14. Do not allow end of plug to whip when winding up the power cord.
- 15.Unplug the cleaner or cleaner attachments.
- 16.Do not clean over anything that is burning or smoking, such as cigarettes, matches, or hot ashes.
- 17.Do not use without pads.
- 18.Test a small floor area with the pads/solution you intend to use before use to make sure it will not harm your floor surface.
- 19.If the supply cord is damaged, the manufacturer or an authorized service center must replace it, in order to avoid a hazard.

20. This appliance is not intended for use by persons (including children) with reduced physical, sensory or Mental capabilities, or lack of experience and knowledge, unless they have been given supervision or instructions concerning the use of the appliance by a person responsible for their safety.

Children should be supervised to ensure they do not play with the appliance.

Do not clean:

- Hair and other parts of the body. This could cause injury.
- Toner dust (from laser printers, copying-machines, etc.). There is danger of fire or explosion.
- Hot ash, burning cigarettes or matches. This could cause a fire.
- Pointed objects such as glass shards, nails, etc. Such objects destroy the cleaning pads.
- Plaster, cement, and fine drilling-dust, makeup, etc. This will cause the cleaning pads to clog causing damage to the appliance.

Never use the appliance near flammable or explosive materials -- there is danger of fire or explosion.

Never use the appliance outdoors -- there is danger of rain and dirt destroying the appliance.

Never stick objects into the appliance's openings or moving parts -- it could cause the appliance to overheat.

Cord Connection

The cleaner and battery charger run on electricity, that means there is always danger of electric shock, so please observe the following;

- Never touch the plug with wet hands.
- Always pull directly with the plug. If you want to disconnect the appliance from the outlet. Never pull on the cord, as it might break.
- Take care that the power cord is not bent, pinched, rolled over or gets in contact with heat sources.
- Use only extension cords suited to the power requirements of the appliance.
- Never immerse the appliance in water or other liquids.
- Only operate the appliance if your outlet voltage is the same as that indicated on the appliance's nameplate. Using the wrong voltage can destroy the appliance.
- If the power cord of this appliance is damaged it must be replaced by the manufacturers, their authorized service representative or a similarly qualified person to avoid danger to the user.

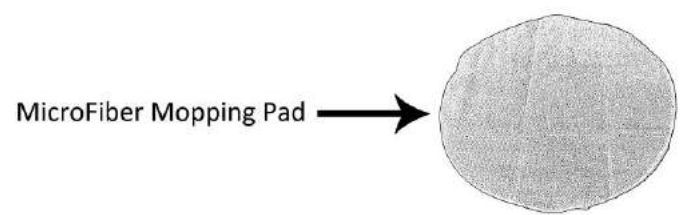
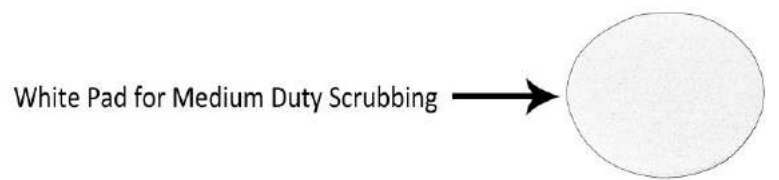
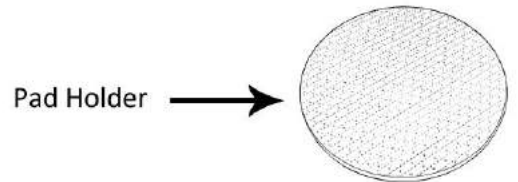
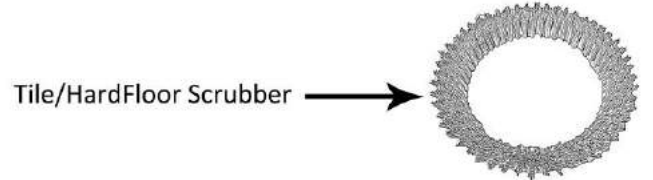
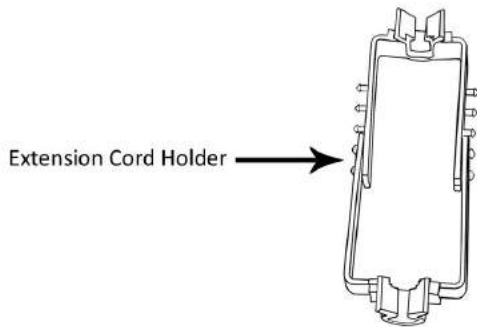
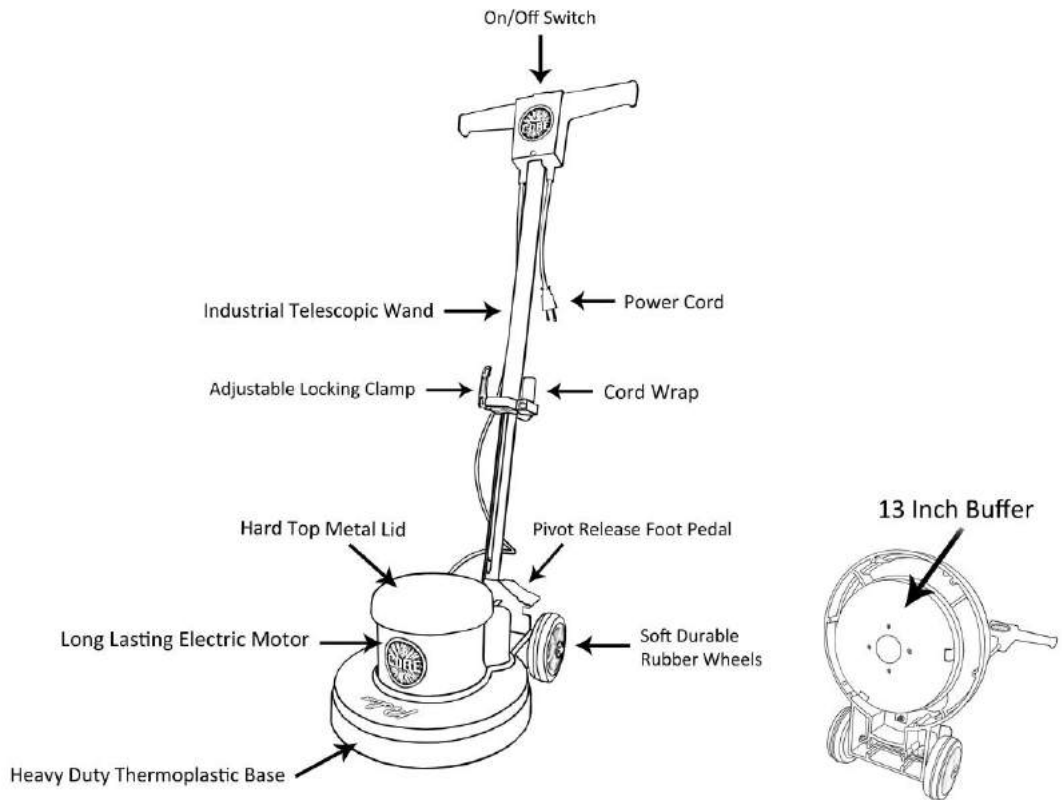
Never use a defective appliance or operate an appliance with a defective power cord. There is a major risk of injury.

Children

Never leave the appliance unattended and use it with special precaution if children or persons who cannot judge dangers are nearby.

People (including children) who are unable to safely operate the appliance on account of their physical, sensory or mental abilities or their lack of experience or knowledge should only use this appliance under supervision or instruction of a responsible person. Packing-materials are not toys. There is danger of suffocation, KEEP OUT OF REACH OF CHILDREN.

GETTING TO KNOW YOUR CLEANER

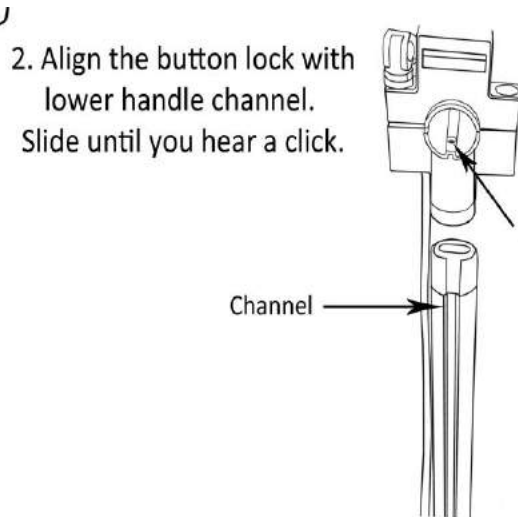
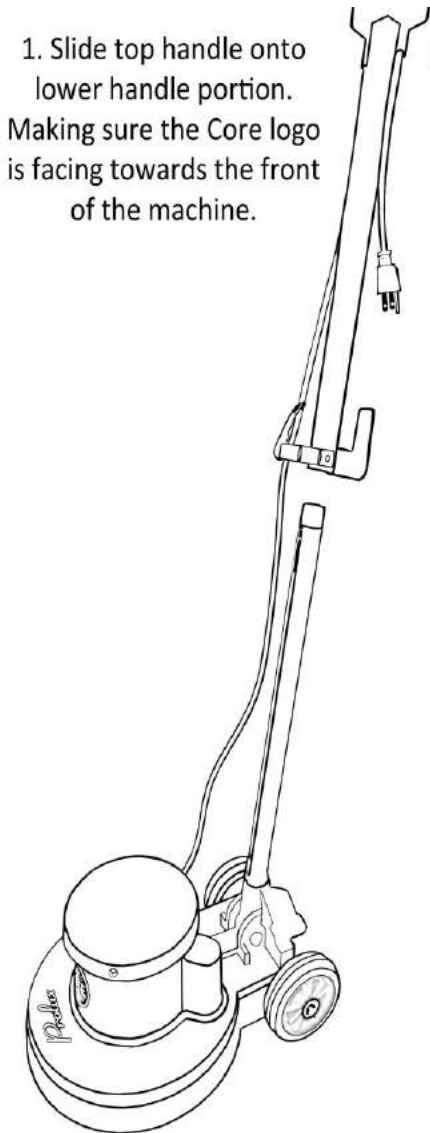


ASSEMBLING YOUR CLEANER

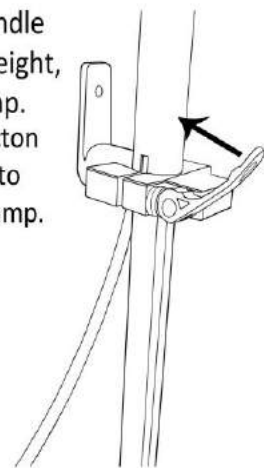
NOTE: Always remove the power plug from the wall outlet before assembling or removing accessories

Assembling your new Prolux Core only requires 3 **EASY** steps.

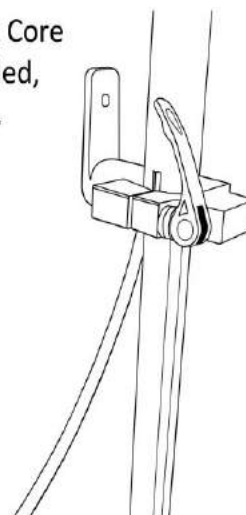
Please refer to the diagram below for instructions.



3. Once you have your handle adjusted to your desired height, lock the adjustable clamp. Move clamp in direction shown in diagram to properly lock the clamp.



Your new Prolux Core is now assembled, its that easy.



OPERATION INSTRUCTIONS

WARNING

To reduce the risk of electric shock, the power cord must be unplugged before removing the cleaning pads, or performing maintenance or trouble shooting.

USING YOUR PROLUX CORE FLOOR BUFFER

Once you have the unit assembled, and the correct pads installed you are now ready to use your Prolux Core.

1. Clear the floor of furniture and other objects.
2. Examine your scrub brush or polishing pad that you are going to use for cleanliness. (Clean or remove debris if needed.)
3. Move to the back corner of the room away from the entrance to begin the cleaning process.
4. Apply buffing solution or polishing cream on the pad or directly on the floor.
5. Adjust the telescopic handle until it's at a comfortable working height.
6. Using either foot, push down on the pivot release pedal. This will make the handle fall towards you.
7. Once plugged in a red light will illuminate on the on/off switch. When ready, grasp the handles firmly and turn the buffer on with the conveniently placed on/off switch.
8. Unlike traditional floor buffers you don't need to push down or lift on the handle to move it. The Prolux Core is easily maneuverable by simply moving it side to side.



■ USING THE CLEANING PADS

To attach the pads/cloths, take the pad holder and set it on the ground. Make sure the white side is upwards, then simply take your Prolux Core and set it on top of the pad holder. Firmly push down using the Prolux Core's weight, you will feel and hear it snap in. Now with the pad holder properly attached all you have to do is set the desired pad/cloth you want to use on the ground and set the Buffer on top of it. To remove the cleaning pads/cloths from the buffer unit, simply detach the pad away from the pad holder.

NOTE: To attach the Tile/Hard Floor scrubber please remove the pad holder. Installation for this pad follows the same step as the pad holder.

■ HOW TO CLEAN SCRUBBING PADS

There are multiple sets of cleaning pads that are included with your buffer, when they become dirty, you can simply take them off the buffer, and wash them by hand in your sink with warm water and for those lightly soiled pads use a mild detergent. You can also use your washing machine, select a light duty cycle, add mild detergent for those heavily soiled pads, and allow them to air dry.

NOTE: DO NOT PLACE IN THE DRYER.

■ CLEANING THE HOUSING

WARNING: Always switch off the appliance and disconnect it from the outlet before cleaning it.

ATTENTION: Do not use Alcohol, cleaning or scouring agents to clean your machine, as these may damage the appliance. Clean the outside of the housing using only a slightly damp washcloth.

Troubleshooting

WARNING: Never use a defective appliance. Always switch off the appliance and disconnect it from the outlet before you start to troubleshoot.

Fault	Possible Cause(s)	Solution
The unit will not turn on.	<ol style="list-style-type: none"> 1. Not Firmly plugged into plug. 2. No voltage in plug 3. Malfunction for start capacitor 	<ol style="list-style-type: none"> 1. Plug unit firmly into extension cord plug 2. Check fuse or breaker 3. First allow the unit to cool completely, then once unit is cool make sure its plugged in and try turning it on. If this still does not work, contact customer service at service@proluxcleaners.com.
Severe Bouncing of Machine	<ol style="list-style-type: none"> 1. Using brush on dry surface without dry shampoo or wet shampoo 2. Brush or pad holder not properly in place 	<ol style="list-style-type: none"> 1. Apply the necessary amount of shampoo. 2. Ensure the brush/pad and or pad holder is properly installed and fully seated correctly.
Rattling noises or irregular noises	<ol style="list-style-type: none"> 1. Handle is loose 2. Body Screw(s) are loose 	<ol style="list-style-type: none"> 1. Check and tighten all screws and clamps located on the buffer handle 2. Check and tighten all screws and clamps located on the buffer.

THREE (5) YEAR LIMITED WARRANTY

Prolux warrants this product's motor free from defects in material and workmanship for a period of three (5) years on the motor, and two (2) years on the body of the cleaner, free from manufacturer defects in material and workmanship from the original date of purchase, when utilized for normal household use.

What is Not Covered by the Prolux Warranty - Warranty Exclusions. This limited warranty does not extend to and expressly excludes:

- 1. Normal wear and tear and/or replacement attachments or accessories, including, without limitation, pad, wheels and other attachments to the cleaner.**
- 2. Damage or burnout of the cleaners body or motor resulting from failure to clear a blockage occurring during the normal course of use.**
- 3. Loss or damage to the cleaner body resulting from conditions beyond the control of Prolux including without limitation, misuse, accidents, abuse, neglect, negligence from the customer, overuse beyond capacity of the cleaner, or unauthorized modification and/or alteration.**
- 4. Loss or damage to the cleaner resulting from failure to follow the required maintenance schedule, or failure to use the cleaner in accordance with written instructions from Prolux, guidelines or the terms of its Owner's Manual.**

If your appliance fails to operate properly while in use under normal household conditions within the warranty period, please contact your authorized PROLUX dealer you purchased the unit from. Non-durable parts including, without limitation, pads, cords, switches, which normally require replacement, are specifically excluded from warranty.

This warranty is limited solely to the cost of the repair or replacement of the unit at Prolux's option. This warranty does not cover normal wear of parts and does not apply to any unit that has been tampered (by unauthorized user) with or used for commercial purposes. This limited warranty does not cover damage caused by shipping damage, misuse, abuse, negligent handling, or damage due to faulty packaging or mishandling in transit.

This warranty is extended to the original purchaser of the unit only and is not transferable.

***IMPORTANT: Before sending unit back for warranty work, contact your authorized PROLUX retailer you bought the unit from first. Unauthorized warranty claims may be sent back.**

Authorized Warranty claims: PROLUX shall be responsible for all parts and labor and the customer shall be responsible for all shipping charges to and from the PROLUX service center.

Prolux is constantly striving to improve our products. Therefore, the specifications contained herein are subject to change without notice.

Product Warranty Registration

Please follow the link below to register your Prolux product.

http://www.proluxcleaners.com/webforms/index/index/id/2/?__store=default

To find more information on this product, including warranty info and to contact Prolux Customer Service. Please follow the link below:

<http://www.proluxcleaners.com>

You can also reach Prolux by phone at: (801) 382-7655

Environmental tips

Once any electronic product is no longer functional, it should be disposed of in such a way as to cause minimum environmental impact, in accordance with the regulations of your local authority. In most cases you can take such products to your local recycling station.

