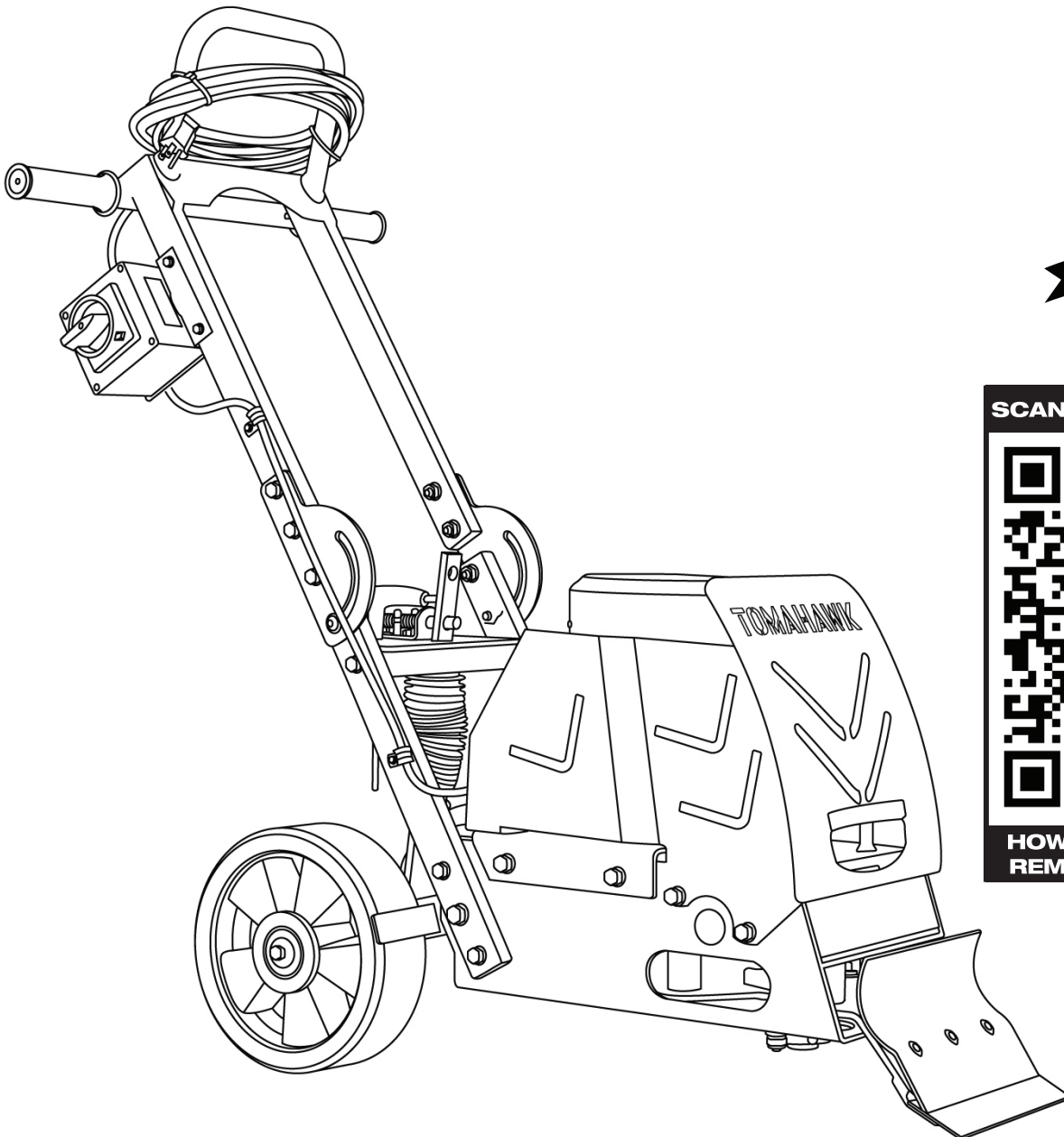


# TOMAHAWK

## TSCP8 ELECTRIC FLOOR SCRAPER

Operations Manual



SCAN FOR ASSEMBLY GUIDE



HOW TO VIDEOS, MANUALS,  
REMODEL GUIDES, & MORE

# Table of Contents

<b>1. SAFETY INFORMATION</b>	<b>4</b>
- Fire Safety	5
- Operating Safety	5
- Service Safety	6
- Electric Motors	7
- Plugs	7
- Extension Cables	7
- NVR - No Volt Release	7
- Health and Safety	8
<b>2. EQUIPMENT DATA</b>	<b>8</b>
- Features	8
- Equipment Specifications	9
- Maximum Recommended Cord Length	9
<b>3. BEFORE STARTING THE MACHINE</b>	<b>10</b>
<b>4. STARTING THE MACHINE</b>	<b>10</b>
<b>5. STORAGE</b>	<b>11</b>
<b>6. APPLICATIONS</b>	<b>11</b>
- Blade Angles	11
- Operation on Concrete Floors	11
- Operation on Wood Floors	11
<b>7. DUST AND CRYSTALLINE SILICA WARNING</b>	<b>12</b>
<b>8. MAINTENANCE RECORD</b>	<b>13</b>
<b>9. REPLACEMENT PARTS</b>	<b>13</b>
<b>10. TROUBLESHOOTING</b>	<b>14</b>
<b>11. WARRANTY</b>	<b>15</b>
<b>12. PARTS MANUAL</b>	<b>17</b>
<b>13. CATALOG AND COUPON</b>	<b>22</b>

# Register Your Equipment

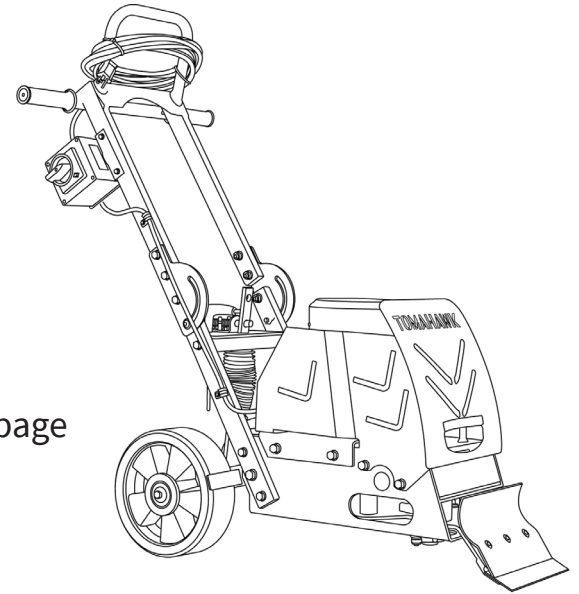
Thank you for purchasing TOMAHAWK® equipment! Your product is covered by the TOMAHAWK® Warranty policy, but in order to activate your warranty, we need you to register your product. In addition to activating your equipment warranty, product registration will grant you access to important product updates, streamlined customer service and more.

## INCLUDED WITH YOUR REGISTRATION

- ✓ Equipment Warranty Activation
- ✓ Product Updates
- ✓ Streamlined Customer Service
- ✓ Exclusive Discounts and Sales

## STEPS TO REGISTER YOUR EQUIPMENT

1. Visit [www.tomahawk-power.com](http://www.tomahawk-power.com)
2. Choose “Product Registration” at the bottom of the page
3. Enter your equipment’s serial number to get started
4. Provide all required information
5. Submit Registration



# Equipment Resources

TOMAHAWK® Customer Service doesn't stop at checkout. We understand to keep a job-site running smoothly - the proper equipment, spare parts, instruction manuals, and more are needed at the drop of a hat. Visit [www.tomahawk-power.com](http://www.tomahawk-power.com) to gain access to the incredible resources below.

## How To Video Library

More of a visual person? Visit our Video Library for equipment assembly instructions, troubleshooting tips, and more!

**Found at the TOMAHAWK® Resource Center**

## Manual and Assembly Guide Library

Visit our Manual Library if you are looking for a lost operations manual or a particular spare part?

**Found on the TOMAHAWK® Manuals Page**

## Service Requests

In need of a quick fix or a service center referral? Submit a Service Request and a TOMAHAWK® Technician will respond shortly to get you the help you need.

**Choose “Service Request” at the bottom of [www.tomahawk-power.com](http://www.tomahawk-power.com)**



This manual provides information and procedures to safely operate and maintain this model. For your own safety and protection from injury, carefully read, understand and observe the safety instructions described in this manual.

Keep this manual or a copy of it with the machine. If you lose this manual or need an additional copy, please contact TOMAHAWK® or visit [www.tomahawk-power.com](http://www.tomahawk-power.com). This machine is built with user safety in mind; however, it can present hazards if improperly operated and serviced. Follow operating instructions carefully. If you have questions about operating or servicing this equipment, please contact TOMAHAWK®.

The information contained in this manual is based on machines in production at the time of publication. TOMAHAWK® reserves the right to change any portion of this information without notice.

No part of this publication may be reproduced in any form or by any means, electronic or mechanical, including photocopying, without express written permission from TOMAHAWK®.

Any type of reproduction or distribution not authorized by TOMAHAWK® represents an infringement of valid copyrights and will be prosecuted. We expressly reserve the right to make technical modifications, even without due notice, which aim at improving our machines or their safety standards.

## 1. Safety Information

This manual contains DANGER, WARNING, CAUTION, and NOTE callouts which must be followed to reduce the possibility of personal injury, damage to the equipment, or improper service.



This is the safety alert symbol. It is used to alert you to potential personal injury hazards. Obey all safety messages that follow this symbol to avoid possible injury or death.



**DANGER** indicates an imminently hazardous situation which, if not avoided, will result in death or serious injury.



**WARNING** indicates a potentially hazardous situation which, if not avoided, could result in death or serious injury.



**CAUTION** indicates a potentially hazardous situation which, if not avoided, may result in minor or moderate injury.



## 1.1 Fire Safety

If your machine catches fire, turn off the electric supply. Using a dry powder or CO2 fire extinguisher, put out the fire. If the fire cannot be put out, keep away and call the fire department. If you are in any doubt about the safety condition of your machine, please consult TOMAHAWK®.

## 1.2 Operating Safety



Familiarity and proper training are required for the safe operation of equipment!

Equipment operated improperly or by untrained personnel can be dangerous! Read the operating instructions contained in both this manual and the engine manual and familiarize yourself with the location and proper use of all controls. Inexperienced operators should receive instruction from someone familiar with the equipment before being allowed to operate the machine.

**1.2.1 NEVER** allow anyone to operate this equipment without proper training. People operating this equipment must be familiar with the risks and hazards associated with it.

**1.2.2 NEVER** use accessories or attachments for this equipment, which are not recommended by TOMAHAWK®. Damage to the rammer and/or injury to user may occur.

**1.2.3 NEVER** leave machine running unattended.

**1.2.4 ALWAYS** be sure operator is familiar with proper safety precautions and operation techniques before using machine.

**1.2.5 ALWAYS** wear hearing protection when operating equipment.

**1.2.6 ALWAYS** wear protective clothing appropriate to the job site when operating equipment.

**1.2.7 ALWAYS** wear hearing protection when operating equipment.

**1.2.8 ALWAYS** store equipment properly when it is not being used. Equipment should be stored in a clean, dry location out of the reach of children.

**1.2.9 ALWAYS** operate machine with all safety devices and guards in place and in working order. **DO NOT** modify or remove safety devices. **DO NOT** operate machine if any safety devices or guards are missing or inoperative.

**1.2.10 ALWAYS** read, understand, and follow procedures in Operator's Manual before attempting to operate equipment.

## 1.3 Service Safety



For your own personal protection and for the safety of those around you, please read and ensure you fully understand the following safety information. It is the responsibility of the operator to ensure that he/she fully understands how to operate this equipment safely. If you are unsure about the safe and correct use of this equipment consult your supervisor.

**1.3.1 DO NOT** attempt to clean or service machine while it is running. Rotating parts can cause severe injury.

**1.3.2 ALWAYS** replace worn or damaged components with spare parts designed and recommended by TOMAHAWK®.

**1.3.3 ALWAYS** keep machine clean and labels legible. Replace all missing and hard-to-read labels. Labels provide important operating instructions and warn of dangers and hazards.

**1.3.4** This equipment is heavy and must not be lifted single-handedly. Must be listed with two people or use suitable lifting equipment.

**1.3.5** Cordon off the work area and keep members of the public and unauthorized personnel at a safe distance.

**1.3.6** Personal Protective Equipment (PPE) must be worn by the operator whenever this equipment is being used.

**1.3.7** Make sure you know how to safely switch this machine OFF before you switch it ON in case you get into difficulty.

**1.3.8** Always switch OFF and unplug the motor before transporting, moving it around the site, or servicing it.

**1.3.9** During use, the motor becomes very hot, allow the motor to cool before touching it. Never leave the motor running and/or unattended.

**1.3.10 NEVER** remove or tamper with any guards fitted, they are there for your protection. Always check that guards are in proper condition, if any are damaged or missing, **DO NOT USE THE MACHINE** until the guard has been replaced or repaired.

**1.3.11 NEVER** pull or guide the machine using the cable and never pull on the cable to disconnect the plug.

**1.3.12 DO NOT** operate the machine when you are ill, feeling tired, or when under the influence of alcohol or drugs.

**1.3.13** Ensure that any trailing cable is protected against damage and not liable to be tripped over or trapped underneath the machine.

**1.3.14 DO NOT** use the Motor Guard as a Lifting Point.

**1.3.15 DO NOT** Jet Wash the machine as this could result in serious injury or even death!

**1.3.16 DO NOT** use this machine in wet conditions. The electrical components of the machine **NEVER** be exposed to water or liquid of any kind as this could result in serious injury or even death!

## 1.4 Electric Motors

All portable electric appliances are dangerous if abused. This machine will only operate on one voltage. Check the power supply to ensure it corresponds to the voltage as stamped on the motor. Make sure that the motor is switched OFF before you plug it into the power supply.

When using a portable transformer it must have a minimum output of 3.3kw and be continuously rated. The symbols on the ON/OFF switch are 0=OFF and I=ON in accordance with international standards.



**DO NOT** use an extension cable between the transformer and the power supply. Always ensure that the cable between the 120v machine and transformer is a minimum length of 10ft. Ensure cable is fitted with cable clip to the operating handle at all times.

## 1.5 Plugs

The following plug types are supplied/fitted to the product: 15 amp rated 120 volt plug type.



**THIS PRODUCT MUST BE GROUNDED**  
**IMPORTANT:** The wires in the mains lead are colored in accordance with the following code:

**GREEN / YELLOW = GROUND, BLUE = NEUTRAL, BROWN = LIVE**

The wire which is colored Green and Yellow must be connected to the terminal in the plug marked E or colored Green and Yellow. The wire which is colored Brown must be connected to the terminal in the plug marked L or colored Red. The wire which is colored Blue must be connected to the terminal in the plug marked N or colored Black. Always ensure before connecting to the supply that the supply voltage is the same as the rated voltage marked on the motor

## 1.6 Extension Cables

If you need to use an extension cable it must be no longer than 25 metres (82 feet) in length. The wire section must be 2.5mm<sup>2</sup> on 240v and 2.5mm<sup>2</sup> on 120v. Ensure that the extension cable is carefully laid out avoiding liquids, sharp edges and places where vehicles might run over it. Avoid allowing the extension cable to be trapped underneath the equipment. Unroll it fully or it will overheat and could catch fire. Make sure that any extension cable connections are dry and safe.

## 1.7 NVR - No Volt Release

The motors which are fitted to the machine are fitted with a NVR (No Volt Release) Switch. This means that if the power fails, the motor will not automatically restart when the power is restored. The machine will need to be manually restarted.

## 1.8 Health and Safety

### 1.8.1 Vibration

Some vibration from the compacting operation is transmitted through the handle to the operator's hands. Refer to specifications & technical data for vibration levels and usage times (recommended maximum daily exposure time). DO NOT exceed the maximum usage times.

### 1.8.2 PPE (Personal Protective Equipment)

Suitable PPE must be worn when using this equipment i.e. Safety Goggles, Gloves, Ear Protection, Dust Mask, and Steel Toe capped footwear (with anti-slip soles for added protection). Wear clothing suitable for the work you are doing. Always protect skin from contact with concrete.

### 1.8.3 Dust

The compaction process can produce dust, which may be hazardous to your health. Always wear a mask that is suited to the type of dust being produced.

## 2. EQUIPMENT DATA

### 2.1 Features

**A [3/4HP / 115V MOTOR]** Suitable for use with household circuits and portable generators.

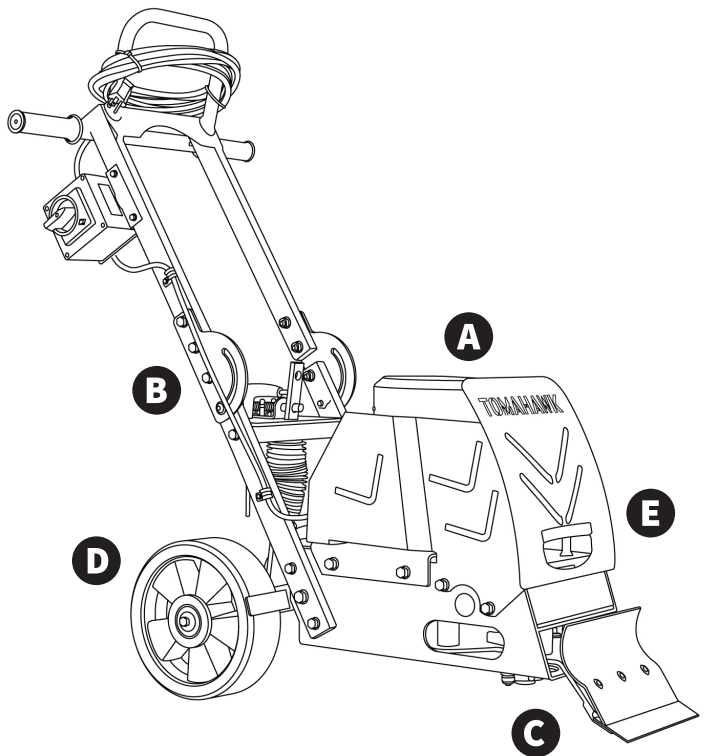
**B [ADJUSTABLE HANDLES]** Use a steep blade angle to remove vinyl, linoleum, and carpet or a low angle for hardwood floor removal.

**C [BLADE CLAMP]** Designed to fit blades from 4" - 12" with the ability to operate up against walls.

**D [WHEELS & KICK PLATE]** For easier pivoting and leverage to tackle the toughest flooring projects.

**E [LIFTING HANDLES]** For additional leverage, use the front handle to lift this scraper up stairs or into vehicles.

**F [WARRANTY]** 3 Year Product Warranty & 1 Year Product Warranty with service centers and factory genuine spare parts available worldwide.



## 2.2 Equipment Specifications

Model	TSCP8
Power	Electric
Horsepower	3/4HP
Voltage	115V
Amperage	11A
Phase	Single
Motor Speed	1725 RPM
Hertz	60hz
Cutting Width (in)	4"-12"
Cutting Angle	3 Adjustable Positions
Wheel Size (in)	8"
Weight (lbs)	150
Length (in)	38"
Width (in)	24"
Height (in)	38"
Warranty	1 Year

## 2.3 Maximum Recommended Cord Length for TOMAHAWK® Equipment Full Loaded Amps May Vary

		SINGLE PHASE			THREE PHASE					
		THIS MODEL								
		115V .5 - 2HP	230V 1.5 - 2HP	230V 3 - 5HP	230V 5HP	460V 5HP	230V 7.5HP	460V 7.5HP	230V 10HP	460V 10HP
CABLE SIZE	12 Gauge	25' CABLE	150' CABLE	50' CABLE	150' CABLE	300' CABLE	100' CABLE	100' CABLE	50' CABLE	200' CABLE
	10 Gauge	50' CABLE	200' CABLE	100' CABLE	200' CABLE	N/A	150' CABLE	150' CABLE	100' CABLE	300' CABLE
	8 Gauge	100' CABLE	300' CABLE	150' CABLE	300' CABLE	N/A	250' CABLE	250' CABLE	150' CABLE	N/A

### 3. BEFORE STARTING THE MACHINE

**3.1** Inspect the work surface for cracks, uneven joints and foreign objects such as nails, screws and pipes. If the unit is used on said surfaces, damage to the blade and/or equipment may result, which can also cause serious injury to the operator. Hazardous areas should be properly identified, clearly marked and avoided.

**3.2** Be sure the power switch is in the OFF position. Inspect the power and extension cords before plugging into the power source. DO NOT use if either cord is frayed or showing wear.

**3.2.1** Inspect the blade carefully before installing. The blade must be sharp and properly installed (See page 6).

**3.2.2** Use only genuine blades. DO NOT use any questionable blades, as serious personal injury and/or damage to property can result.



**BLADE IS EXTREMELY SHARP!**

Wear heavy duty work gloves when changing the blades and handle with care.

**3.3** Adjust the angle of the cut for the conditions of the job at hand (See page 6 for suggestions). If you need to make a test cut, do it in an inconspicuous area.

**3.4** When operating on carpet and sheet floors, pre-cut the material in a strip as wide as the blade.

NOTE: A special blade is required for ceramic tile removal.

### 4. STARTING THE MACHINE

#### 4.1 Operation

**4.1.1** Make sure the machine is clear of walls and/or obstructions.

**4.1.2** Tilt it back slightly to shift the weight onto the wheels.

**4.1.3** Plug in the machine.

**4.1.4** Turn the switch to ON.



Do not force the machine.

Shut OFF the machine before repositioning the scraper for another pass.



## 5. STORAGE

The scraper should be stored on level ground. Be sure to secure the scraper as necessary to avoid it from falling down.

## 6. APPLICATIONS

### 6.1 Blade Angles

The Tomahawk Floor Scraper is equipped with an adjustable handle that provides 3 different positions.

Use the steep blade angle for removal of vinyl, linoleum, VCT, and carpet.

Use lower blade angles for more aggressive surfaces, such as hardwood floor removal.

### 6.2 Operation on Concrete Floors

For concrete floors, the bevel (sloped edge) of the blade should face upwards at a fairly steep angle.

If the blade “jumps up” from the floor surface, the angle may be too shallow.

When removing concrete-based floors, work diagonally on the tile surface.

Use only  $\frac{2}{3}$  rds of the width of the entire blade for each pass. Removing too much of the material at one time will damage the equipment.

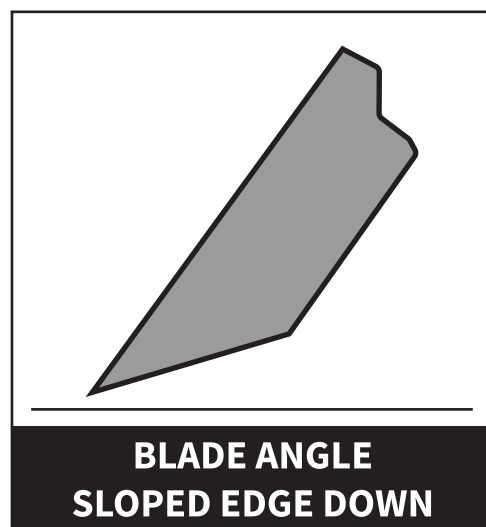
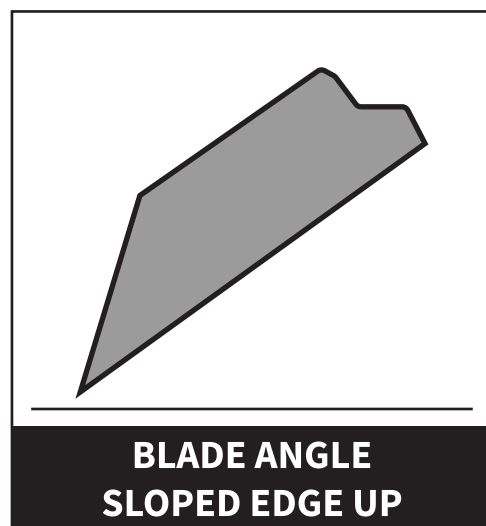
### 6.3 Operation on Wooden Floors

On wooden based floors, the bevel (sloped edge) of the blade should be facing downwards at a flatter angle. If the angle is too steep, the floor base material can be damaged.

Remove material in the direction of the wood grain to minimize gouging.

NOTE: Some gouging is unavoidable and will occur.

Use only  $\frac{2}{3}$  rds of the width of the entire blade for each pass. Removing too much of the material at one time will damage the equipment.



## 7. DUST AND CRYSTALLINE SILICA WARNING



Grinding/cutting/drilling of masonry, concrete, metal and other materials can generate dust, mists and fumes containing chemicals known to cause serious or fatal injury or illness, such as respiratory disease, cancer, birth defects or other reproductive harm. If you are unfamiliar with the risks associated with the particular process and/or material being cut or the composition of the tool being used, review the material safety data sheets and/or consult your employer, the manufacturers/suppliers, governmental agencies such as OSHA and NIOSH and other sources on hazardous materials. California and some other authorities, for instance, have published lists of substances known to cause cancer, reproductive toxicity, or other harmful effects.

Control dust, mist and fumes at the source where possible. In this regard use good work practices and follow the recommendations of the manufacturers/suppliers, OSHA/NIOSH, and occupational and trade associations. Water should be used for dust suppression when wet grinding/ cutting/drilling is feasible. When the hazards from inhalation of dust, mists and fumes cannot be eliminated, the operator and any bystanders should always wear a respirator approved by NIOSH/MSHA for the material being used.



Grinding/cutting/drilling of masonry, concrete and other materials with silica in their composition may give off dust or mists containing crystalline silica. Silica is a basic component of sand, quartz, brick clay, granite and numerous other minerals and rocks. Repeated and/or substantial inhalation of airborne crystalline silica can cause serious or fatal respiratory diseases, including silicosis. In addition, California and some other authorities have listed respirable crystalline silica as a substance known to cause cancer. When grinding/cutting/drilling such materials, always follow the respiratory precautions mentioned above.

See more on the importance of dust prevention and silica warnings at [osha.gov/silica](https://www.osha.gov/silica).

## 8. MAINTENANCE RECORD

TOMAHAWK® tools are assembled with care and will provide years of service when properly maintained. Preventative maintenance and routine service are essential to the long life of your tamping rammer. Adhere to reading through this manual thoroughly. You will find that you can do some of the regular maintenance yourself. However, when in need of parts or major service, be sure to contact a TOMAHAWK® Technician. For your convenience we have provided this space to record relevant data about your TOMAHAWK® equipment.

Invoice Number:		Type of Machine:	
Date Purchased:		Dealer Name:	
Serial Number:		Dealer Phone:	

REPLACEMENT PARTS USED					MAINTENANCE LOG	
PART NO.	DESCRIPTION	QTY	COST	DATE	DATE	OPERATION

## 9. REPLACEMENT PARTS

**9.1** For replacement parts and technical questions visit [tomahawkpower.com](http://tomahawkpower.com) or scan the QR code on the front of this manual.

**9.2** Not all equipment components are available for replacement. The illustrations within this manual are a convenient reference to the location and position of parts in the assembly sequence.

**9.3** When ordering parts, the following will be required: equipment model number, serial number/lot, date code, and description.

**9.4** The distributor reserves the right to make design changes and/or improvements to equipment, parts, accessories, and manuals without notice.

## 10. TROUBLESHOOTING

Problem	Cause	Solution
<b>Motor fails to start</b>	Fuse or Circuit Breaker tripped	Replace Fuse or reset the breaker
	Stator is shorted or went to ground Motor will make a humming noise and the circuit breaker or fuse will trip	Contact TOMAHAWK® Customer Service
	Motor overloaded or load jammed	Inspect to see that the load is free. If free, Contact TOMAHAWK® Customer Service.
	Capacitor (on single phase motor) may have failed	Contact TOMAHAWK® Customer Service
	Starting switch has failed	Contact TOMAHAWK® Customer Service
<b>Motor runs but dies down</b>	Voltage drop	If voltage is less than 10% of the motor's rating contact power company or check if some other equipment is taking power away from the motor or Contact TOMAHAWK® Customer Service.
	Load increased	Verify the load has not changed. Verify equipment hasn't got tighter. If fan application verify the air flow hasn't changed or Contact TOMAHAWK® Customer Service
<b>Motor takes too long to accelerate</b>	Defective capacitor	Contact TOMAHAWK® Customer Service
	Faulty stationary switch	Contact TOMAHAWK® Customer Service
	Bad bearings	Contact TOMAHAWK® Customer Service
	Voltage too low	Make sure that the voltage is within 10% of the motor's nameplate rating. If not, contact power company or check if some other equipment is taking power away from the motor or Contact TOMAHAWK® Customer Service
<b>Motor overload protector continually trips</b>	Load too high	Verify that the load is not jammed. If motor is a replacement, verify that the rating is the same as the old motor. If previous motor was a special design, a stock motor may not be able to duplicate the performance. Remove the load from the motor and check motor doesn't trip.
	Ambient temperature too high	Verify that the motor is getting enough air for proper cooling. Most motors are designed to run in an ambient temperature of less than 40°C. (Note: A properly operating motor may be hot to the touch.)
	Protector may be defective	Contact TOMAHAWK® Customer Service
	Winding shorted or grounded	Contact TOMAHAWK® Customer Service
<b>The motor makes a loud rubbing or grinding noise</b>	Damage to internal workings	Contact TOMAHAWK® Customer Service

## **11. WARRANTY**

Your new TOMAHAWK® equipment is warranted to the original purchaser for a period of one-year.

(12 months) from the original date of purchase. The TOMAHAWK® warranty is against defects in design, materials and workmanship.

### ***The following are not covered under the warranty:***

1. Damage caused by abuse, misuse, dropping or other similar damage caused by or as a result of failure to follow assembly, operation or user maintenance instructions.
2. Alterations, additions or repairs carried out by persons other than TOMAHAWK® or their recognised agents.
3. Transportation or shipment costs to and from TOMAHAWK® or their recognised agents, for repair or assessment against a warranty claim, on any machine.
4. Materials and/or labor costs to renew, repair or replace components due to fair wear and tear.

TOMAHAWK® and/or their recognised agents, directors, employees or insurers will not be held liable for consequential or other damages, losses or expenses in connection with or by reason of or the inability to use the machine for any purpose.

### **Warranty Claims**

Before submitting any warranty claim, your new TOMAHAWK® equipment should be registered through [www.tomahawk-power.com](http://www.tomahawk-power.com). Follow the steps on page 3 to complete the equipment registration. After registration is complete, all warranty claims should firstly be directed to TOMAHAWK® through the online Service Request form found at [www.tomahawk-power.com/pages/service-request](http://www.tomahawk-power.com/pages/service-request).

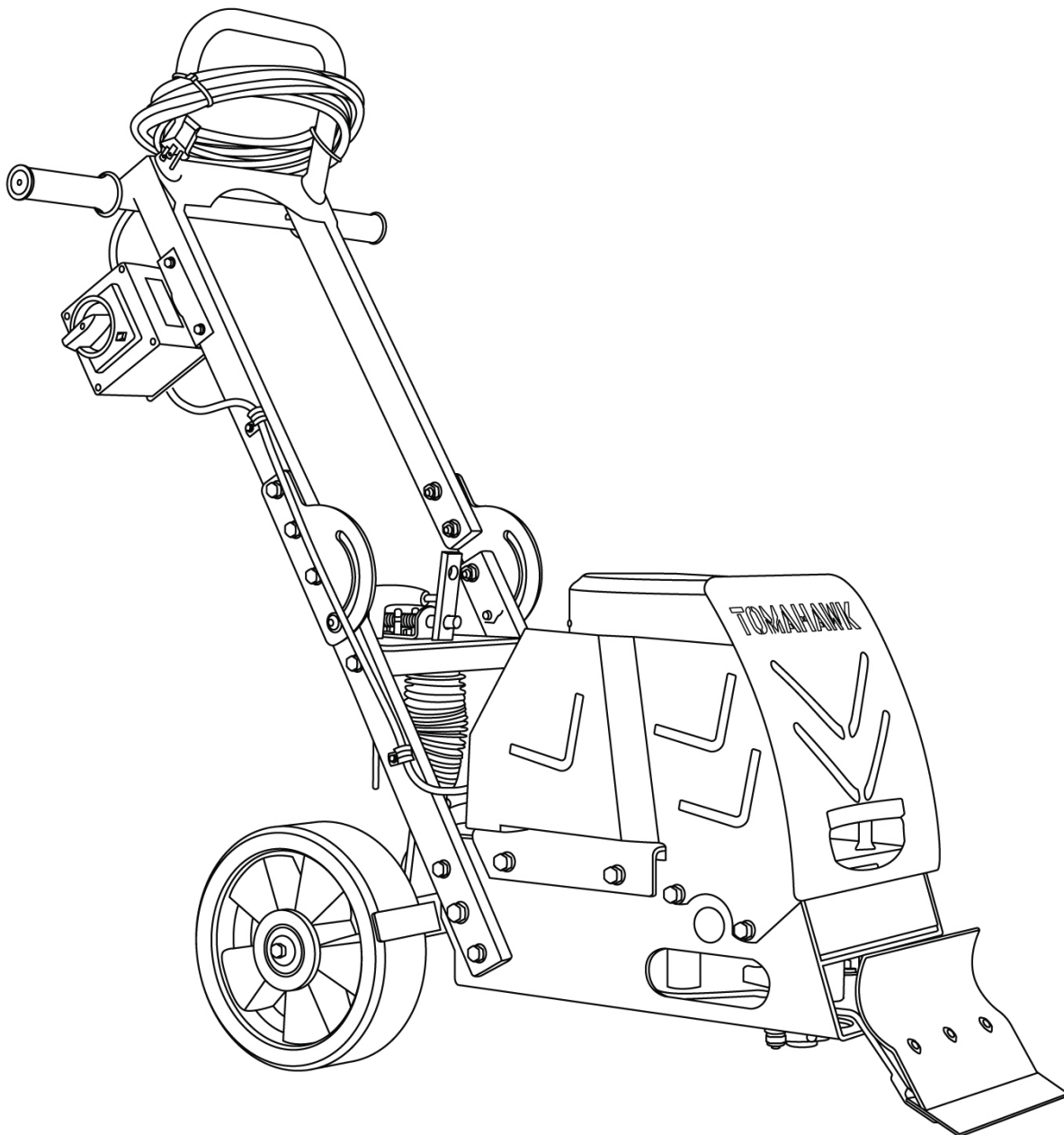




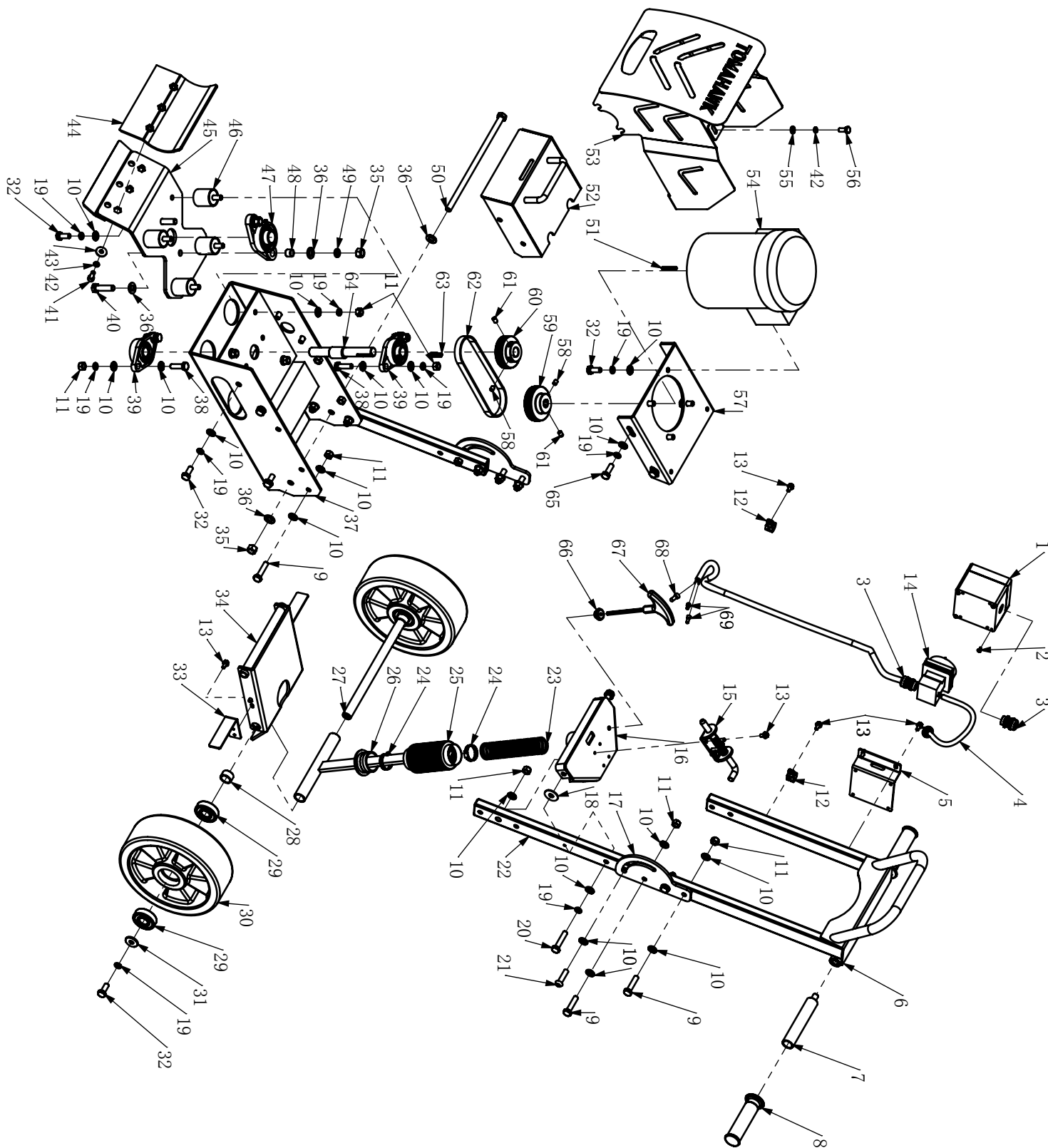
# TOMAHAWK

## TSCP8 ELECTRIC FLOOR SCRAPER

## Parts Manual



# TSCP8 FLOOR SCRAPER



No.	Description	Drawing No.	Qty
1	Electrical Box	1510-00024-4	1
2	Bolt M4x8	16040801	4
3	Joint, Electrical Box	70000029	2
4	Wire	1510-13000-1	1
5	Plate, Electrical Box	1510-00005-2	1
6	Handle Assy.	1510-07000-3	1
7	Handle Bar	1510-10000-3	2
8	Handle Grip	70260000	2
9	Bolt M10x45	15100450	10
10	Washer M10	11100000	54
11	Lock Nut M10	13100001	20
12	Clamp $\Phi$ 16	70000021	2
13	Bolt M6x12	15060122	12
14	Switch	1510-00018-4	1
15	Pin	1510-00004-4	1
16	Adjustment Panel	1510-03000-3	1
17	Connecting Plate	1510-00019-2	2
18	Washer	1510-00003-2	2
19	Spring Washer M10	12100000	28
20	Bolt M10x50	15100500	2
21	Allen Screw M10x40	16104006	2
22	Lower Bar	1510-01000-3	2
23	Spring	1510-00006-4	1
24	Clamp $\Phi$ 32- $\Phi$ 44	70000030	2
25	Protection Sleeve	1510-00020-4	1
26	Adjustment Bar	1510-09000-3	1
27	Rare Shaft	1510-00008-1	1
28	Bushing	1510-00010-1	2
29	Bearing 6304-2RZ	216304-2RZ	4
30	Wheel	1510-00009-4	2
31	Washer M10x30x3	11103003	2
32	Bolt M10x25	15100250	14
33	Mudguard	1510-00007-2	2
34	Carriage	1510-08000-3	1
35	Lock Nut M12	13120001	3
36	Washer M12	11120000	6
37	Base	1510-02000-3	1
38	Bolt M10x35	15100350	4
39	Bearing UCFL204	21UCFL204	2
40	Bolt M12x45	15120450	2
41	Allen Screw M8x35	16082003	3
42	Spring Washer M8	12080000	5
43	Washer M8x24x3	11082403	3
44	Upper Clamp Plate	1510-05000-3	1
45	Lower Clamp Plate	1510-04000-3	1
46	Shock Absorber	1510-00001-4	4
47	Bearing UCFL205	21UCFL205	1
48	Bushing	1510-00023-1	2

No.	Description	Drawing No.	Qty
49	Spring Washer M12	12120000	2
50	Bolt M12x290	1510-00021-4	1
51	Key 4.76x38.1	204.7638.1C	1
52	Cap, Base	1510-06000-3	1
53	Front Shield	1510-11000-3	1
54	Motor	1510-00016-4	1
55	Washer M8	11080000	2
56	Bolt M8x20	15080200	2
57	Engine Plate	1510-12000-3	1
58	Set Screw M8x10	16081005	2
59	Drive Pulley	1510-00017-4	1
60	Driven Pulley	1510-00012-4	1
61	Bolt M8x12	16081205	2
62	Belt	276PJ220	1
63	Key 6x28	20060628A	1
64	Eccentric Shaft	1510-00011-1	1
65	Bolt M10x30	15100300	4
66	Rubber Ring	1510-00013-4	1
67	Allen Wrench	1510-00014-4	1
68	Wire Connector CE-5X	70000062	1
69	Wire Connector CE-2X	70000061	2





# CLEAN MORE IN LESS TIME

For big areas and busy schedules, Tomahawk 38" push sweepers cover a wider path to reach more surface area so you can finish sweeping faster around indoor and outdoor spaces and on wet or dry surfaces!



Item #: TOS38

**14.5** GAL **COMMERCIAL**  
**38" PUSH SWEEPER**

[www.tomahawk-power.com](http://www.tomahawk-power.com)





# TOMAHAWK

## PRODUCT CATALOG

### COMPACTION



HONDA  
ENGINES

**3,550 lbs/ft Vibratory Rammer**  
Part#: TR68H

3.6 HP Honda GXR120 Engine  
Easily achieve a 100% compaction rating  
3-in-One Fuel System with carburetor protection  
13" x 11" plate for narrow trenches and corners  
3 Year Engine Warranty & 1 Year Product Warranty



HONDA  
ENGINES

**3,400 lbs/ft Plate Compactor**  
Part#: TPC90H

5.5 HP Honda GX160 Engine  
Easily achieve a 100% compaction rating  
22" x 20" cold, rolled steel beveled base plate  
Includes 3.5 gallon water tank for asphalt compaction  
3 Year Engine Warranty & 1 Year Product Warranty



HONDA  
ENGINES

KOHLER  
ENGINES

**3,000 lbs/ft Plate Compactor**  
Part#: TPC80 & TPC80H

6 HP Kohler CH260 & 5.5 HP Honda GX160 Engines  
Easily achieve a 100% compaction rating  
16.5" x 21.5" plate for narrow trenches and corners  
Optional Honda Engine model: TPC80H  
3 Year Engine Warranty & 1 Year Product Warranty

### FINISHING



**6.5 Gal Backpack Concrete Sprayer**  
Part#: TCS6.5

Maintain constant, adjustable pressure up to 450 PSI  
Achieve superior concrete finishes with even spraying  
Spray 15,000 sq ft in less than 10 minutes  
Compatible with major manufacturer wands  
1 Year Product Warranty



HONDA  
ENGINES

**1.6 HP Vibratory Concrete Screed**  
Part#: TVSA-H

1.6 HP Honda GX35 Engine  
Aluminum Magnesium blades available from 8ft - 14ft  
Finish concrete 4X faster than other screed methods  
360° adjustable handle placement  
3 Year Engine Warranty & 1 Year Product Warranty



HONDA  
ENGINES

**6" Early Entry Green Concrete Saw**  
Part#: TFS6H

5.5 HP Honda GX160 Engine  
Maximum cutting depth of 1 3/16 inches  
OSHA compliant vacuum port for dust collection  
Includes 6" early entry concrete blade  
3 Year Engine Warranty & 1 Year Product Warranty

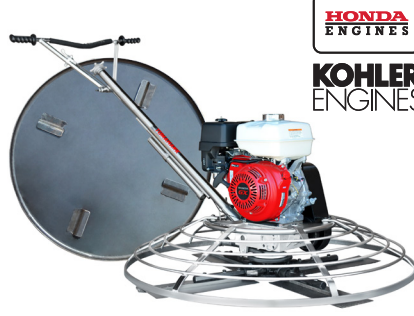
### FINISHING



HONDA  
ENGINES

**1.6HP Backpack Concrete Vibrator**  
Part#: TVIBH + TVW10-P

1.6 HP Honda GX35 engine  
Consolidation with speeds of 10,000-12,000 VPM  
Quick Connect centrifugal clutch vibrator  
1" and 2" Diameter Whips Available in 10ft Length  
3 Year Engine Warranty & 1 Year Product Warranty



HONDA  
ENGINES

KOHLER  
ENGINES

**36" & 46" Concrete Power Trowel**  
Part#: TPT36H/K & TPT46H/K

6 HP/14HP Kohler & 5.5HP/8.5HP Honda Engines  
Adjust trowel blade pitch from 0-28°  
60-115 RPM rotor speed for superior concrete finishes  
Includes float pan and trowel blades  
3 Year Engine Warranty & 1 Year Product Warranty



HONDA  
ENGINES

**8" Gas Powered Concrete Scarifier**  
Part#: TSCAR8H

5.5 HP Honda GX160 Engine  
Remove traffic lines at 800 - 1,000 linear ft/hr  
Tungsten Carbide Blade Kit Available  
OSHA approved dust port for silica vacuum removal  
3 Year Engine Warranty & 1 Year Product Warranty

HAVE QUESTIONS?

Contact us. *We're here to help!*

Email us at [sales@tomahawk-power.com](mailto:sales@tomahawk-power.com)





USE CODE **SAVE10**  
AT CHECKOUT FOR  
**10% OFF YOUR ORDER AT**  
**WWW.TOMAHAWK-POWER.COM**

## POWER / WELDING

INVERTER SERIES



**2000 Watt Inverter Generator**  
Part#: TG2000I

2000 Max Watts, 1600 Rated Watts  
Run Time of 8 hours on 1 gallon of gas  
OSHA and GFCI Compliant  
Parallel technology capable for double the power  
2 Year Product Warranty

INVERTER SERIES



**210 Amp Portable Welder Generator**  
Part#: TWG210A

Steady 50 - 210 Amp DC welding output  
60% Duty Cycle for extended use  
Suitable for welding rods from 6010 to 7024  
Electric Key Start with battery included  
2 Year Product Warranty



**7000 Watt Generators**  
Part#: TG7000

7000 Max Watts, 5500 Rated Watts  
Voltage Selector gives Full Wattage for 120V or 240V  
Run Time of 8 hours at 50% Load  
OSHA and GFCI Compliant  
2 Year Product Warranty

## PEST CONTROL



**3.7 Gallon 3HP Backpack Fogger**  
Part#: TMD14

Turbo Boosted Pump with 40ft + Horizontal Reach  
Sprays 1 acre in 30 minutes  
10X Faster than Manual Pump Sprayers  
Converts to Leaf Blower with 200 MPH Air Velocity  
1 Year Product Warranty



**4.75 Gallon Battery Power Sprayer**  
Part#: eTPS18

Reach Up to 30ft Horizontal Reach  
Sprays 6000 sq ft in 10 minutes  
10X Faster than Manual Pump Sprayers  
70 PSI Commercial Grade Pump  
1 Year Product Warranty



**5 Gallon Backpack Power Sprayer**  
Part#: TPS25

Reach Up to 30ft Horizontal Reach  
Sprays acres in 10 minutes  
10X Faster than Manual Pump Sprayers  
50-435 Adjustable PSI Commercial Grade Pump  
1 Year Product Warranty

## AND MORE



**4 Gal. Backpack Fertilizer Spreader**  
Part#: TGS30

Reach up to 30ft Horizontally  
Sprays 1 acre in 30 minutes  
20X Faster than push spreaders  
Converts to Leaf Blower with 200 MPH Air Velocity  
1 Year Product Warranty



**3" Full Trash Water Pump**  
Part#: TW3H

Moves liquids at a rate up to 375 gal/min  
Handle solids up to 1.5"  
Silicone carbide seals and a chrome plated volute  
8 HP engine protected by rugged all purpose frame  
3 Year Engine Warranty & 1 Year Product Warranty



**Commercial 38" Push Sweeper**  
Part#: TOS38

Collect up to 14.5 gallons of dust and debris  
Can be used indoors & outdoors on wet or dry surfaces  
Includes integrated airflow control and fine dust filter  
Lightweight design, capable of fitting through doorways  
1 Year Product Warranty

**ASSEMBLED IN THE**

\* All coupons in this manual are valid only for orders placed on [www.tomahawk-power.com](http://www.tomahawk-power.com), unless otherwise noted. Coupon codes may only be used once per customer and may not be combined with any other offer. Coupons may expire at any time without notice.

**PARTS SOURCED GLOBALLY**

(866) 577-4476

[www.tomahawk-power.com](http://www.tomahawk-power.com)



## Power Your World

Tomahawk understands to keep a job-site running smoothly the proper equipment and spare parts are needed at the drop of a hat. With same day shipping and faster delivery times, count on Tomahawk to keep you powered throughout the day! With long lasting parts and engines, Tomahawk equipment will be the star of your fleet for years to come. Visit [www.tomahawk-power.com](http://www.tomahawk-power.com) to get started today!

# TOMAHAWK

TOMAHAWK®, LLC  
San Diego, CA

### Sales Support

(866) 577-4476  
[sales@tomahawk-power.com](mailto:sales@tomahawk-power.com)

### Equipment Support

(866) 577-4476  
[support@tomahawk-power.com](mailto:support@tomahawk-power.com)

[www.tomahawk-power.com](http://www.tomahawk-power.com)



### FACEBOOK

[facebook.com/TomahawkPowerUSA](https://facebook.com/TomahawkPowerUSA)

### YOUTUBE

[youtube.com/TomahawkPower](https://youtube.com/TomahawkPower)

### INSTAGRAM

[@tomahawkpower](https://instagram.com/tomahawkpower)